



Members Quarterly Newsletter

Issue LXXIV
4th quarter, March 2026

www.pittsfieldhistory.com

Pittsfield, New Hampshire—The Gem of the Suncook Valley
Liz Dimmick, Martha Moloy editors

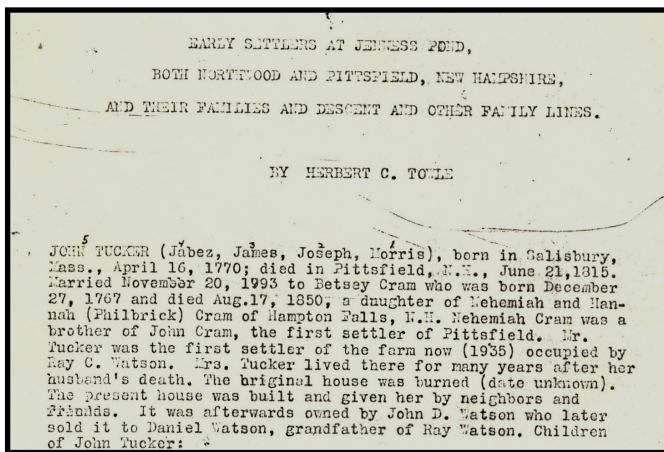
Pittsfield Historical Society
4 Oak Street
Pittsfield, NH 03263
603-435-8004

Accessions

Jenness Pond

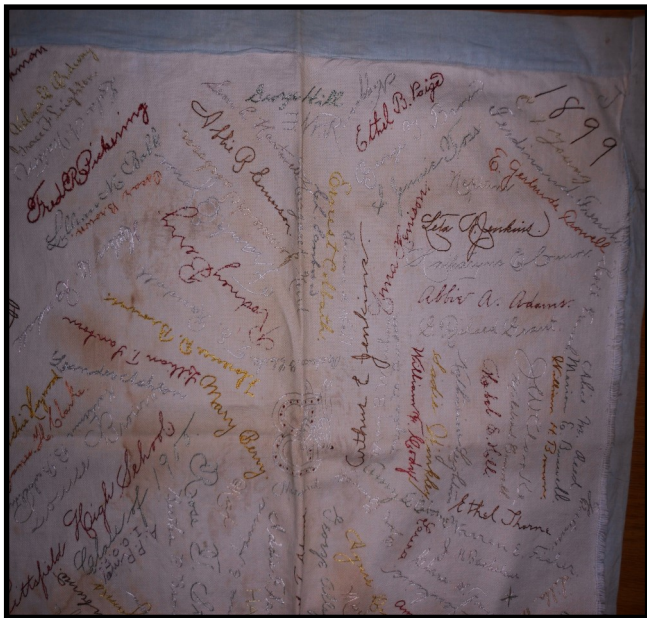
Thanks to Justin Newton the Historical Society received a photocopy of Herbert Towle's notes, *Earlier Settlers of Jenness Pond Both Northwood and Pittsfield, New Hampshire, and Their Families and Descent and Other Family Lines*. Those who are interested in family history would find this book highly informative since it provides a genealogy of local people.

For example: *John Tucker, born in Salisbury, MA in 1770, died in Pittsfield in June 1815. He married Betsey Cram who was a daughter of Nehemiah and Hannah (Philbrick) Cram of Hampton Falls, NH. Nehemiah Cram was a brother of John Cram, the first settler of Pittsfield. Mr. Tucker was the first settler of a farm now (1935) occupied by Ray C. Watson.*
(Information modified for easier reading.)



1889 Pillowcase

Roberta Pratt, of Center Barnstead, donated an exquisite example of needlework and history from 1889. It is a unique pillowcase with embroidered signatures of students attending the Pittsfield Academy at that time. Mrs. Pratt's grandfather's signature is included. She also donated a small but pristine pharmaceutical bottle marked "VA Grant Pure Drugs." Mr. Grant was a pharmacist in Pittsfield circa 1880s.



Opportunities to Tour the Museum

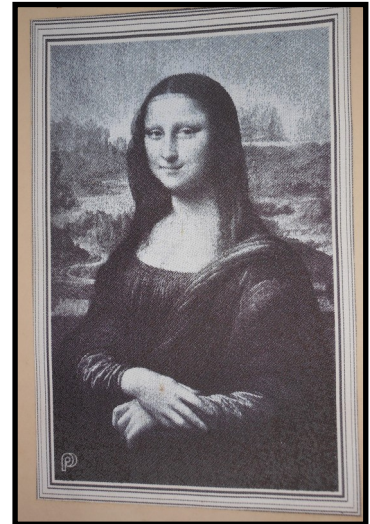
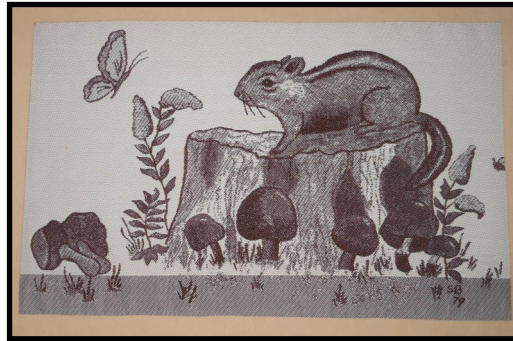
The museum is open on the second Sunday of each month. (Weather permitting.) Please join us between 1 and 4 pm. However, if this doesn't meet your needs, please call the museum at 603-435-8004 to arrange a time. Remember, the museum is open most Tuesdays between 9 am and noon. Here is the Sunday schedule for the remainder of the year.

April 12	July 12	Oct. 11
May 10	Aug. 9	Nov. 8
June 14	Sept. 13	Dec. 13

Accessions

Pittsfield Weaving

Many thanks to Wayne Hackett who donated numerous examples of the fine weaving produced by the Pittsfield Weaving Company. Many of you may remember the popular woven calendars and may even have had one hanging in your kitchen. Not only were they a quick guide to the dates, but they were works of art. Gene Matras provided his original artwork for a calendar series from 1992 to 2006 with unique images of the great outdoors. Mr. Hackett also donated a clock given to Russell Carr in 2002 for 20 years of service.



Russell Carr-2002

In Recognition of 20 Years
of Service



Please Remember!

The Historical Society is conducting its yearly membership drive—our largest fundraiser during the year. Many thanks to those who have already sent in their membership dues. The money is greatly appreciated and is used to keep the lights on, the building warm, and to pay for insurance.

If it has slipped your mind or if the letter was put aside, please take a moment to send your donation in as soon as possible. Your continued support keeps the Historical Society and Lyman Park a visible part of the Pittsfield community.

Thank you!

Early History of Pittsfield Weaving

Fritz Petig (1888-1985), a Pittsfield industrialist, was the founder of Pittsfield Weaving in 1926. Mr. Petig was born in Barmen, Rhineland, Germany and moved to the United States in 1924, where he helped set up a factory in North Bergen, New Jersey. Shortly after, he and two friends, Fritz Schnaudt and William Kammann, began to look for a new place to settle. Mr. Schnaudt had relatives in Barnstead, NH, so he scouted out available locations there. Nothing met their specifications.

Eventually, they set up a shop in a vacant building in Pittsfield owned by George Freese, on the corner of Bridge and Fayette streets, and the Pittsfield Weaving Company was founded. In 1928, the three friends became owners of the building,

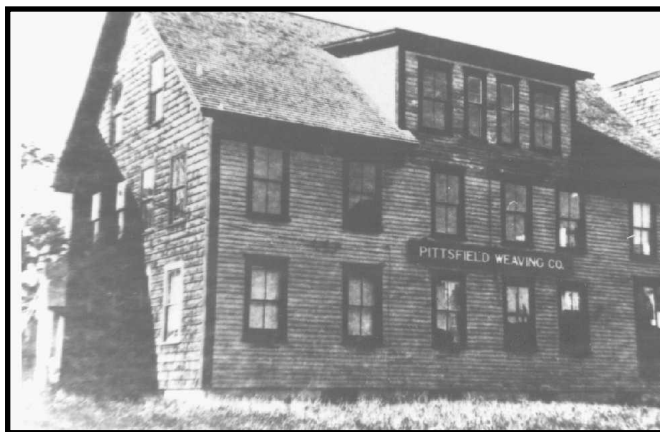
In 1927, looms arrived from Boston and were shipped by railroad to Pittsfield and made ready for operation. The company specialized in weaving and braiding narrow fabrics known for looking like woven needle work. This woven needlework was used in manufacturing clothes labels. This was the mainstay of the business for many years. The Company was instrumental in refining the broadlooms to serve the narrow fabric industry.



Fritz Petig

As you can see from the sample of the donations received from Mr. Hackett, Pittsfield Weaving Company produced more than woven labels; they experimented and succeeded in producing artwork.

Original Building c1901
Formerly a wheelwright
and horse shoeing shop



Early 1900 Sample Labels



Expanded Building
New building erected across the street
when old building was razed 1981-82

February Vacation was Another Hit for Families!

On Tuesday February 25th we hosted our third annual history hunt at the museum. This was our biggest year yet with six families joining us to hunt for different things through the museum by following a passport of clues! The kids came ready to investigate and with minds wide open to learn about our historic town. I am grateful to my children, nieces, and nephews who joined me and helped the day run along smoothly. We offered a spread of snacks for the families to enjoy, which led to some nice discussions afterward. I am grateful that some news families were able to see our beautiful museum.

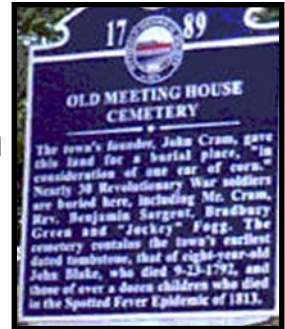
Submitted gratefully,
Jaime Koladish

Update on Historic Trail Signs

The Historic Trail signs which were removed for refurbishment have been reinstalled!

Thanks to Ray Webber for his diligence in finding a method to reinstall the refurbished signs. They look great, as good as the day they were installed—over 30 years ago.

Other signs will be refurbished as money permits.



Future Activities

Spring is always a time of renewal and cleaning. Again this year, the Historical Society will be planting colorful flowers at Lyman Park. The larger plan this year is to replace the roof on the gazebo. You may have noticed that it is slightly green with moss. Watch for activity when the weather cooperates.

Also, the Thyng Memorial will be cleaned! With bi-yearly cleaning we hope to maintain it with our own members. Jaime Koladish may be asking for your help.

Please join us on Saturday, August 1 at the tennis court on Drake Field. It is the site of the Craft Fair held in conjunction with the Rotary's Balloon Festival. Last year was the first year the Historical Society held the Craft Fair at the tennis court, and it was a success! Of course, it didn't hurt that the weather was wonderful. This is one of our major fund raisers, so please come out to support the crafters.

Various programs will be held during the early summer and fall, so stay tuned. One is already planned: the History of the Josiah Carpenter Library. The library is celebrating its 125th anniversary of the dedication of the building.

We will also be participating in Old Home Day with a booth and open house at the museum. This is a chance for people to ask questions, purchase our 2027 calendar, and celebrate Pittsfield!

Additional details will be provided as the year progresses!
Hope to see you at these events.

We can always use help with cleanup at Lyman Park.

