



# Members Quarterly Newsletter

Issue LXVI I I  
3rd quarter, September 2019

Pittsfield Historical Society  
13 Elm Street  
Pittsfield, NH 03263  
603-435-8004

Pittsfield, New Hampshire – The Gem of the Suncook Valley  
Liz Dimmick & Bill Provencal, co-editors

## Accessions

### Adolph Legendre



Many thanks to Larry Berkson for donating 3 paintings by Adolph Legendre. Adolph was born in 1870 or 1871 in Lowell, MA, moved to Manchester, NH, and later moved to Pittsfield in 1926. Adolph was not only a house, sign, and carriage painter, he was also a "well-known landscape artist." (*Shoppers Guide*, May 10, 1962). The Pittsfield Historical Society also has a beautiful room divider painted by him.

Thanks to Mary Thorpe for a souvenir tea cup with a picture of Josiah Carpenter library. This tea cup was distributed by M.P. Foss, Jewelers, in Pittsfield, NH.



The Historical Society also received a medal awarded by the NH Interscholastic Athletic Association to members of the Baseball Champions, Class M, 1965. It was awarded to Terry Robinson, Team Manager and donated by Denise Robinson.



## Update on the New Museum

The new building for our headquarters and museum is progressing rapidly. It is framed and the doors have been installed. The roof is on and the cupola designed and erected by Ray Webber sits atop. The radiant heat in the first floor has been installed and the cement floor has been poured.

We are still looking for sponsors of display areas. For \$500 donors will have their names placed on an aluminum sign at the entrance to the building and on the display area they are sponsoring.

We are still selling bricks for \$100 each which will be placed in a patio outside the building. They are a great way to honor a loved one, recognize a business, or post a notice. Characters may be placed on three lines with 18 spaces. For example, "In Honor of John Jones, 1954-2017" or "Donated by Plastic Signs, Inc."



Front of Building



Certificate of Recognition for Purchasing a Brick

## **Pontine Theater**

### **Alice Brown's Tales of New England**

It was the first time the Pittsfield Historical Society presented "theater" as one of its yearly programs and it was a success! Co-Directors, Marguerite Mathews and Greg Gathers of the Pontine Theater based in Portsmouth, presented three short stories written by Alice Brown using storytelling and Victorian-style toy-theatre figures created by Gathers. The detailed toy-theatre figures and the voice inflections captured the stories' essence and entranced the audience.



## **Lyman Park Update**

Have you noticed how nice Lyman Park looks? Many people have donated their time and talents to maintain this local oasis. There is the spring clean-up crew, the mowing crew, the overall maintenance crew who have fixed the lights, and, of course, Jeff Huntington from Pleasant View Gardens who donated all the colorful plants! A big "Thank You" from the Society to all of you. Your help is very much appreciated. It couldn't be done without you.

Thanks to Gail and Jim Allard; Joe Darrah and his crew; Liz Dimmick; Fuzz Freese, who brought the manure; Dave Harper and his two sons; Ellen Harper; Jeff Huntington, Pleasant View Gardens; Jaime Koladish; Brian Mika; Bill and Linda Provencal; Paul Provencal; Mark Riel; Kevin Stevens; Kathy Trayner; Judy and Ray Webber; and Clayton Wood.

## **Save The Date!**

The last program for the 2019 year will be held in October. As you can see, we've had a wide variety of programs this year! A glimpse into the history and significance of cellar holes; a theatrical presentation of stories written by Alice Brown; and a trip through New Hampshire learning the back story of the roadside historical markers. We hope you have enjoyed them and look forward to seeing you at the program on *New Hampshire on High; Historic and Unusual Weathervanes of the Granite State*.

### **Wednesday, October 9**

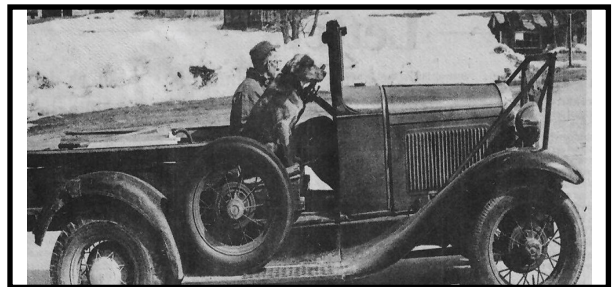
#### ***New Hampshire on High: Historic and Unusual Weathervanes of the Granite State***

This program offers a fun and engaging look at the historic and unusual weathervanes found on New Hampshire's churches, town halls, and other public buildings from earliest times to the present. Presented by Glenn Knoblock, this program will trace the history of weathervanes and their practical use and interesting symbolism. This program is available to us through New Hampshire Humanities and is free and open to the public.

## **2020 Calendar Showcases**

### **Pittsfield's Early Transportation**

Photographs from the 1800's to the 1950's depict horse drawn wagons and carriages, a steer powered cart full of school children, stagecoaches, steam and diesel railroad engines, early bicycles, a motorcycle, a bi-plane, busses, and old cars and trucks. Accompanying the 24 photos, the most ever published in a Pittsfield Historical Society calendar, are descriptions of each. Also included is a current map of Pittsfield's Historic Trail. These calendars can be purchased at the Pittsfield Town offices, the Josiah Carpenter Library and the Pittsfield Historical Society headquarters on most Tuesday mornings between 9 am and noon, or by calling Fuzz Freese at 603-435-7777. Cost is still only \$10.



A. J. Daroska and his infamous 1930 Model A Ford truck. He installed a power take-off on the front and a detachable cord wood saw. Allegedly, he once sawed 1,000 cords of wood the first year he was in business. He also moved nearly everything imaginable, including pianos, freezers, safes, furniture, and rocks. Riding with him is his trusty dog, Bronia