

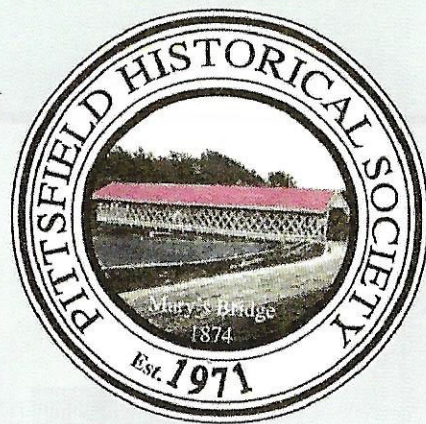
THE HISTORY OF THE PITTSFIELD HISTORICAL SOCIETY

The Pittsfield Historical Society was founded in 1971, leased space in the old Academy Building on Park Street for public meetings and programs, and established a museum. After several years its headquarters were moved to the Memorial School. Interest began to wane and the Society became dormant.

In 1993 Harriet Ames, a founding member, called Larry Berkson and Robert Moulton to her home, where lying in ambush were a couple of other former members. Harriet did the speaking and was very firm that the two invited guests WERE going to revive the Society. Both finally agreed with one condition: the purchase of permanent headquarters.

A group of energetic people was formed, the former Grange Hall on Elm Street purchased and renovated, and the Society was off and running.

The Society has undertaken several projects since its inception, the driving force behind the Cemetery Headstone Identification Project, Pittsfield's Hall of Fame, the Historical Trail, Thyng Memorial and Lyman Park, to name but a few. In 2008 the Society took on responsibility for administering the selection of Pittsfield's Citizen of the Year and in 2014 assisted with the Congregational Church's 225th Anniversary celebration. To date the Society has published 14 books on Pittsfield's history.



MISSION STATEMENT

Pittsfield Historical Society's mission is to educate the public about the significance of Pittsfield's past and its relevance and relationship to the lives of the citizens of Pittsfield today. In support of this mission, the Society collects, preserves and interprets materials pertaining to Pittsfield's history.

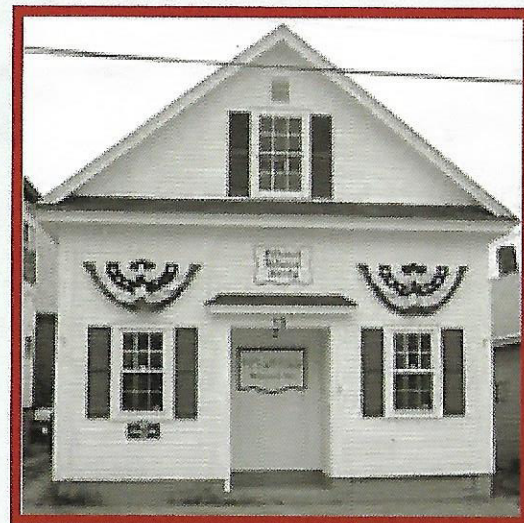
**Museum hours
Tuesdays 9AM-Noon**

**13 Elm Street
Pittsfield, NH 03263
603-435-8004**

www.pittsfieldhistory.com

Pittsfield Historical Society

Today...



**BUY-A-BRICK
Fundraiser**

Engraved memorial bricks are being sold to "pave" the way to a commemorative garden to be established at the new Museum of the Pittsfield Historical Society.

Benjamin Palizotti®

The Pittsfield Historical Society has purchased the old Washington House lot at the corner of Main and Oak streets and will be erecting a new building there beginning in the spring of 2019.

Plans are being formulated to establish a commemorative garden on the Museum grounds. The Buy-A-Brick project affords an opportunity for individuals today to be a part of Pittsfield's history tomorrow. Your gift of a brick may be purchased to honor yourself, loved ones past or present, whatever or whomever you wish to remember. The bricks will be sold for \$100 apiece, and may be engraved with 3 lines of 18 characters each for a 4"x 8" brick.

It will be a two-story 30'x 80' edifice. Most importantly, the museum will be home to all of the Society's artifacts which currently are being stored in numerous locations throughout the town.



I would like to reserve a permanent, engraved brick to be installed at the commemorative garden site of the new Pittsfield Historical Society building.

Name _____

Address _____

Phone _____

Email _____

If you have questions, please call (603) 798-3984
• 501(c)(3) tax deductible •

[illegible]